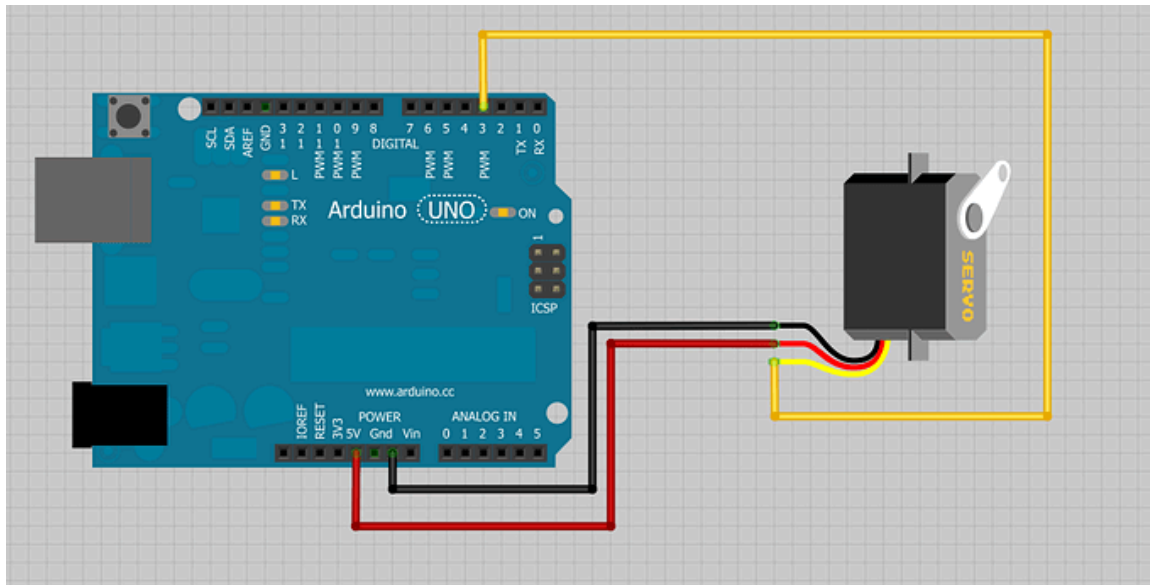
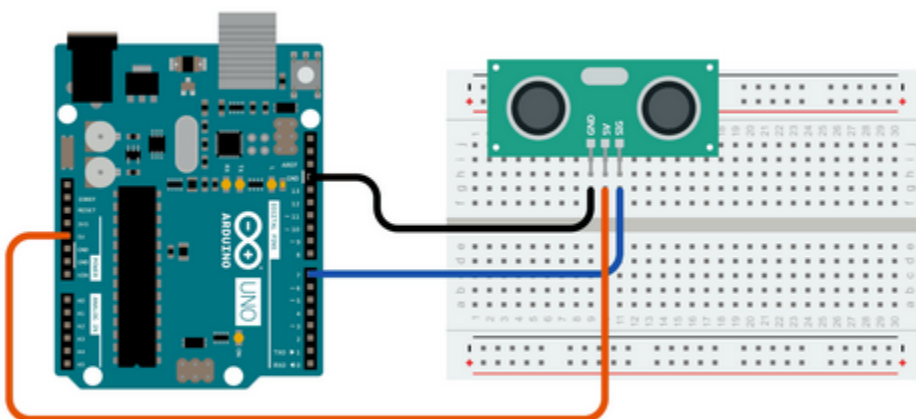


## COM310 - Sensor Project

The goal of this project is to use a microcontroller or SBC with a sensor to control an actuator. When the sensor registers some sort of movement, the actuator should move. You can use any microcontroller or SBC in the lab besides the Jetson, and you can use any actuators.



An example of wiring up a standard servo to an Arduino board.



An example of wiring a PING ultrasonic sensor. Most sensors in the lab will use the same wiring interface.